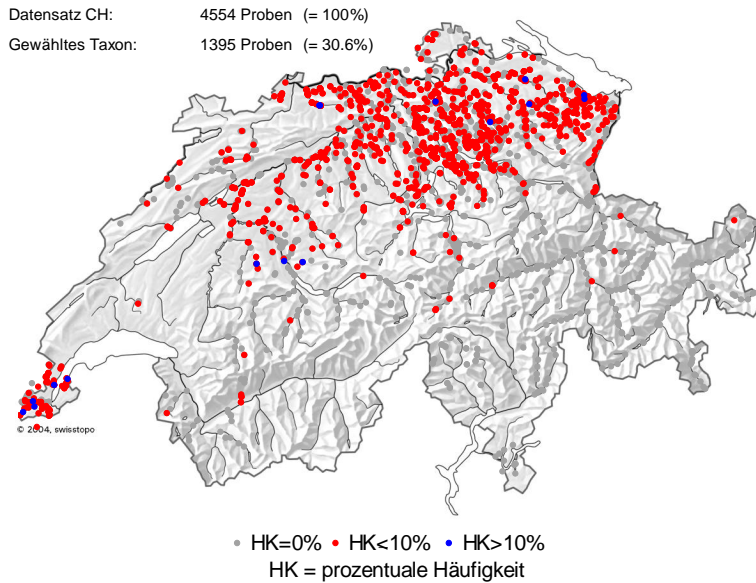


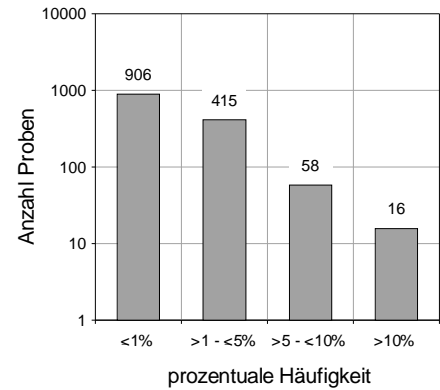
Surirella brebissonii var. kuetzingii KRAMMER et LANGE-BERTALOT

DVNR: 6228

Geografische Verteilung

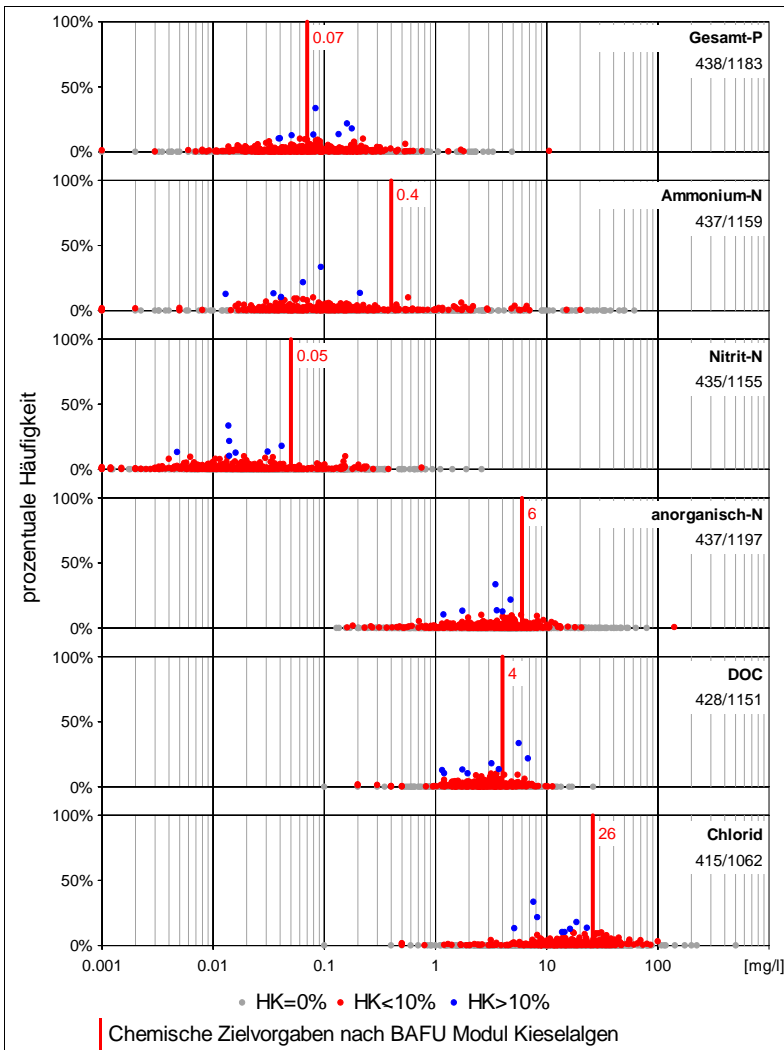


Anzahl Proben und Vorkommen

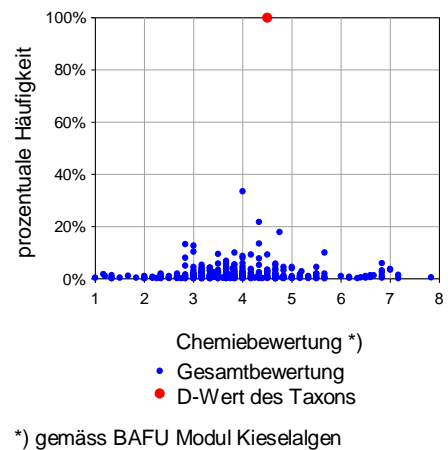


Fließgewässer:	1380 / 4031	34.2%
See:	15 / 468	3.2%
Kläranlagen:	0 / 46	0.0%
Sonstige:	0 / 9	0.0%
Total:	1395 / 4554	30.6%

Chemieparameter



Chemiebewertung



Kieselalgenindex DI-CH

