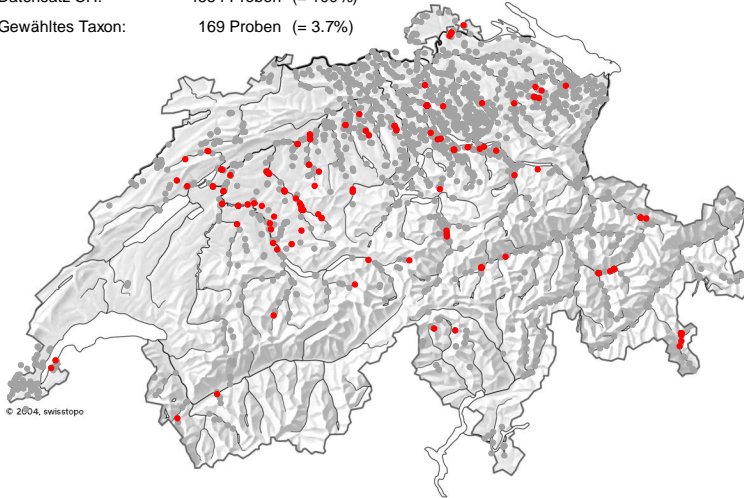


Navicula minuscula GRUNOW

DVNR: 6515

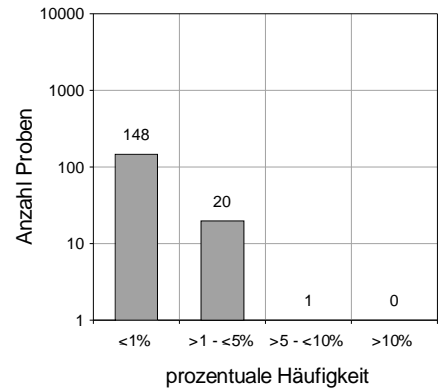
Geografische Verteilung

Datensatz CH: 4554 Proben (= 100%)
 Gewähltes Taxon: 169 Proben (= 3.7%)



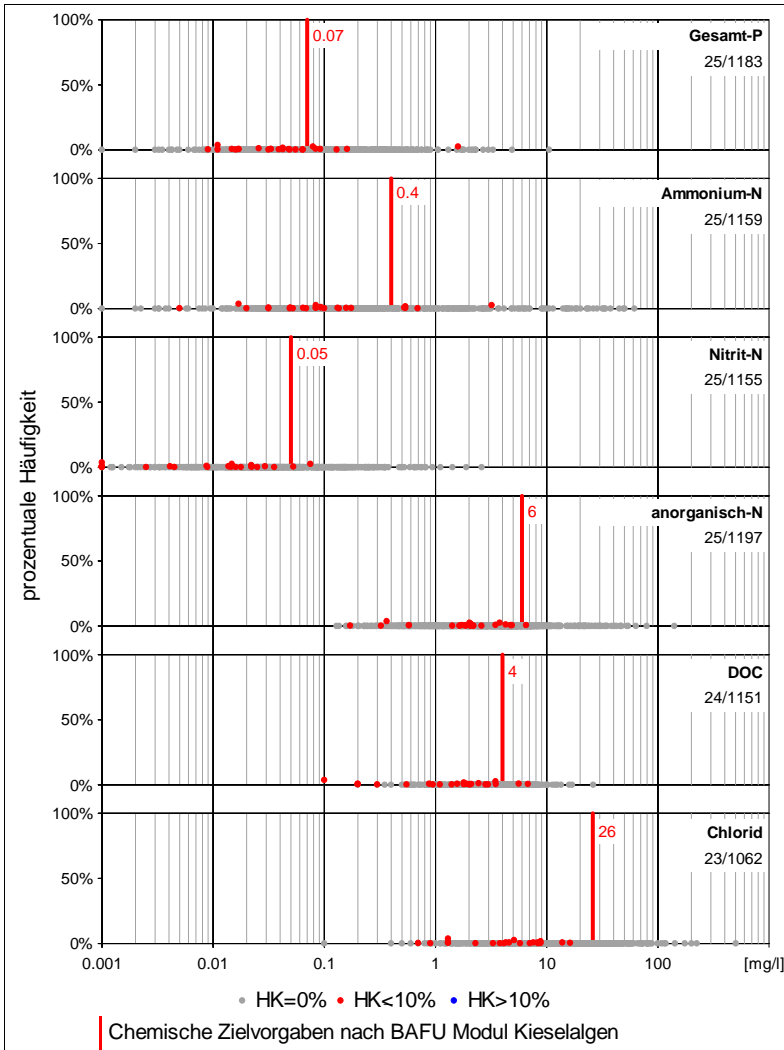
• HK=0% • HK<10% • HK>10%
 HK = prozentuale Häufigkeit

Anzahl Proben und Vorkommen

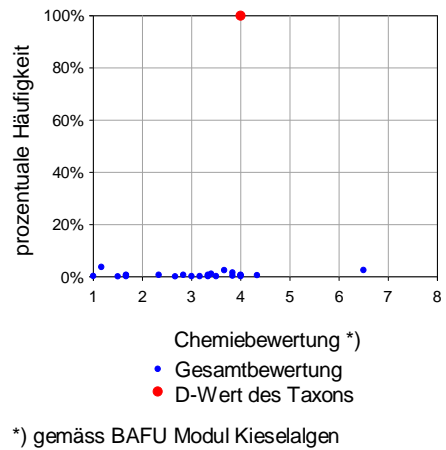


| | | |
|-----------------------|------------|------|
| Fließgewässer: | 164 / 4031 | 4.1% |
| See: | 4 / 468 | 0.9% |
| Kläranlagen: | 1 / 46 | 2.2% |
| Sonstige: | 0 / 9 | 0.0% |
| Total: | 169 / 4554 | 3.7% |

Chemieparameter



Chemiebewertung



Kieselalgenindex DI-CH

