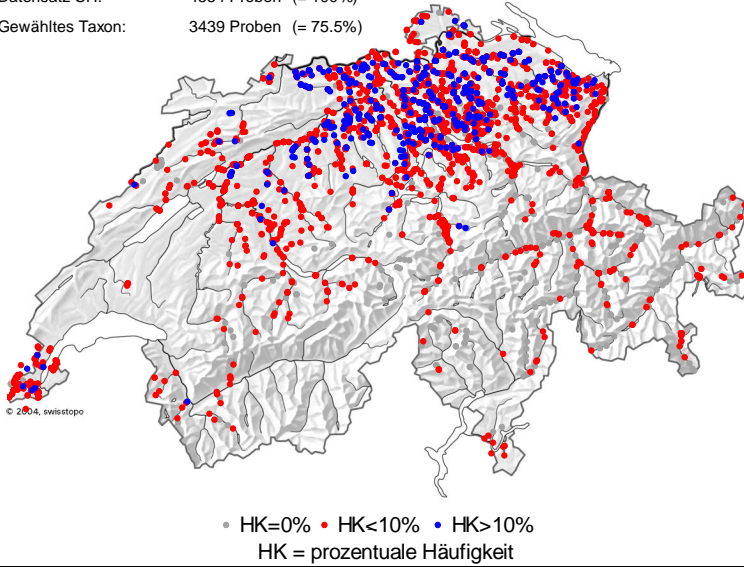


# Navicula cryptotenella LANGE-BERTALOT

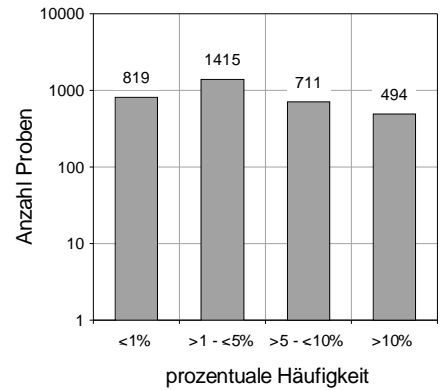
DVNR: 6889

## Geografische Verteilung

Datensatz CH: 4554 Proben (= 100%)  
 Gewähltes Taxon: 3439 Proben (= 75.5%)

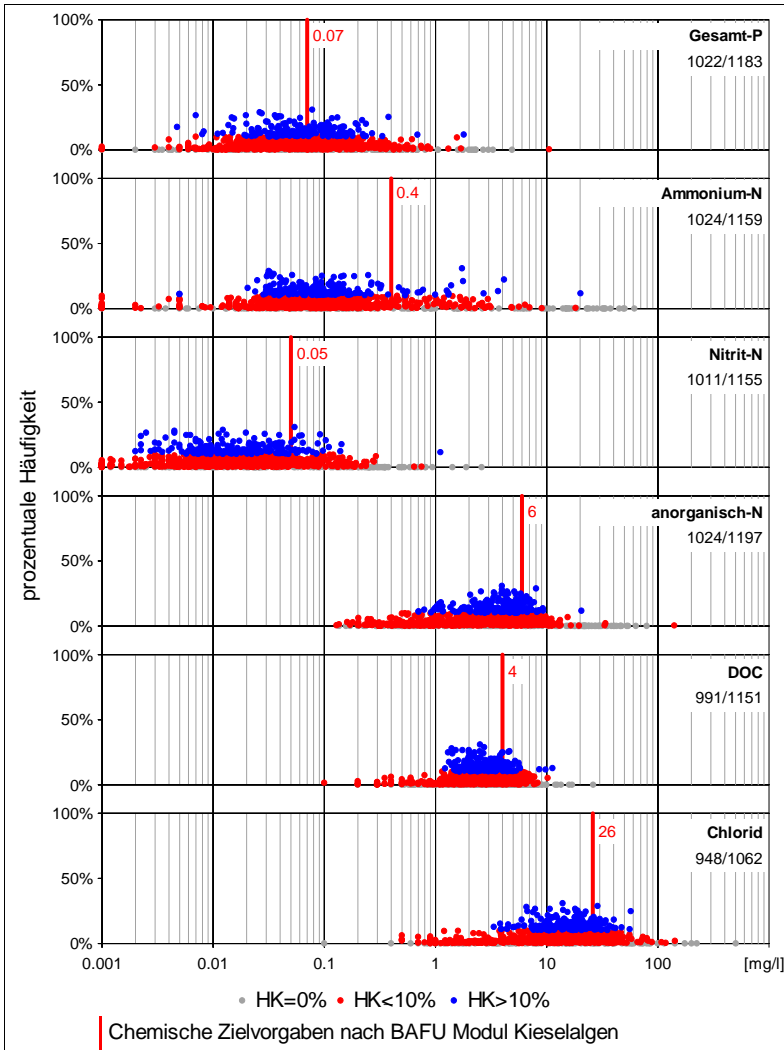


## Anzahl Proben und Vorkommen

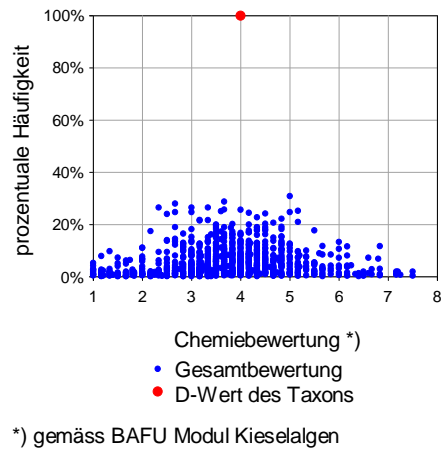


<b>Fließgewässer:</b>	3334 / 4031	82.7%
<b>See:</b>	96 / 468	20.5%
<b>Kläranlagen:</b>	3 / 46	6.5%
<b>Sonstige:</b>	6 / 9	66.7%
<b>Total:</b>	3439 / 4554	75.5%

## Chemieparameter



## Chemiebewertung



## Kieselalgenindex DI-CH

