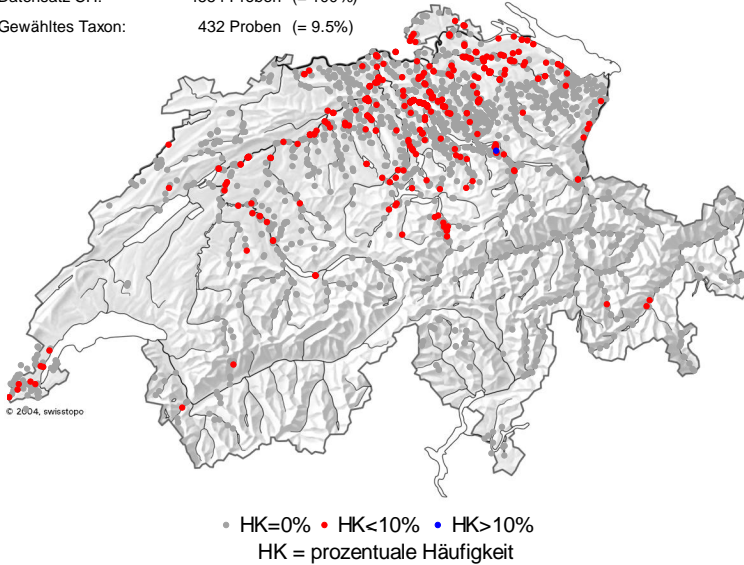


Navicula capitatoradiata GERMAIN

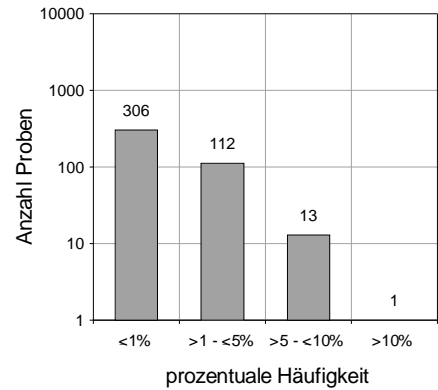
DVNR: 6910

Geografische Verteilung

Datensatz CH: 4554 Proben (= 100%)
 Gewähltes Taxon: 432 Proben (= 9.5%)

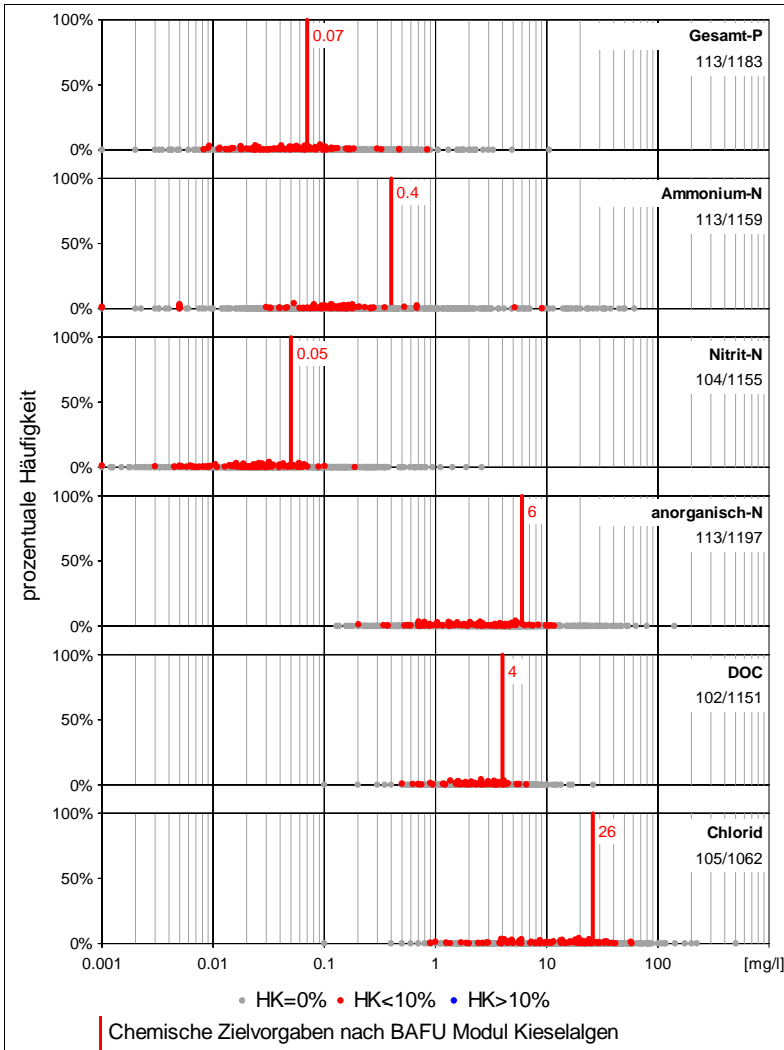


Anzahl Proben und Vorkommen

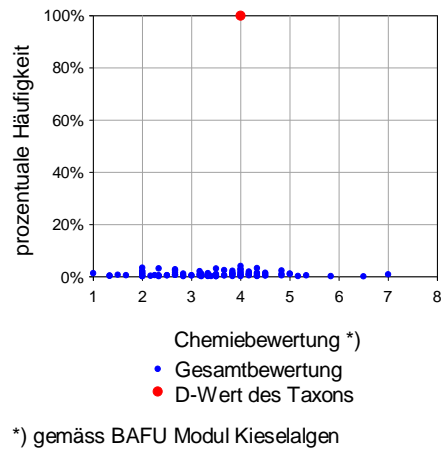


Fließgewässer:	413 / 4031	10.2%
See:	19 / 468	4.1%
Kläranlagen:	0 / 46	0.0%
Sonstige:	0 / 9	0.0%
Total:	432 / 4554	9.5%

Chemieparameter



Chemiebewertung



Kieselalgenindex DI-CH

