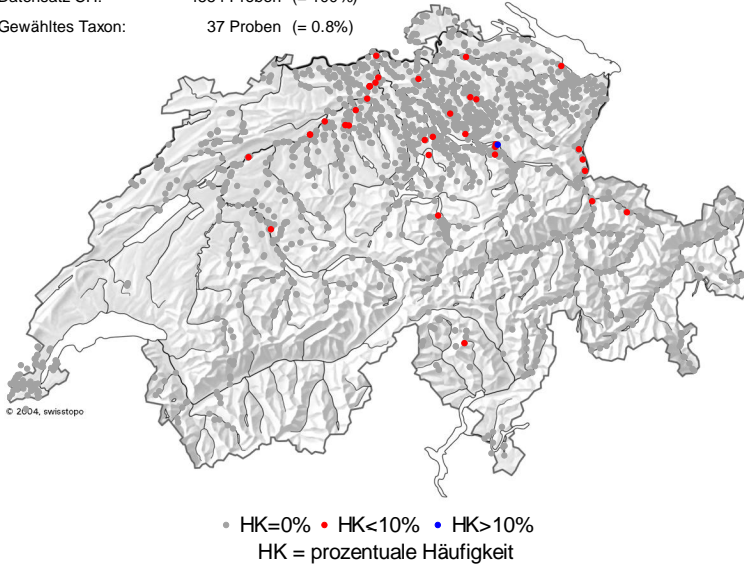


# Gomphonema exilissimum LANGE-BERTALOT et REICHARDT

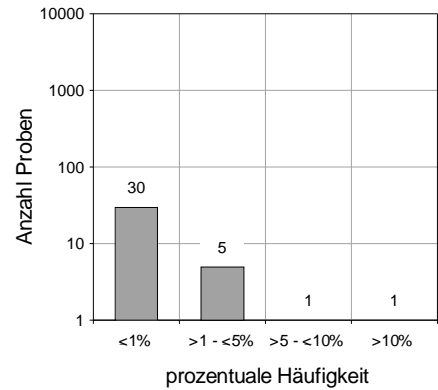
DVNR: 100152

## Geografische Verteilung

Datensatz CH: 4554 Proben (= 100%)  
 Gewähltes Taxon: 37 Proben (= 0.8%)

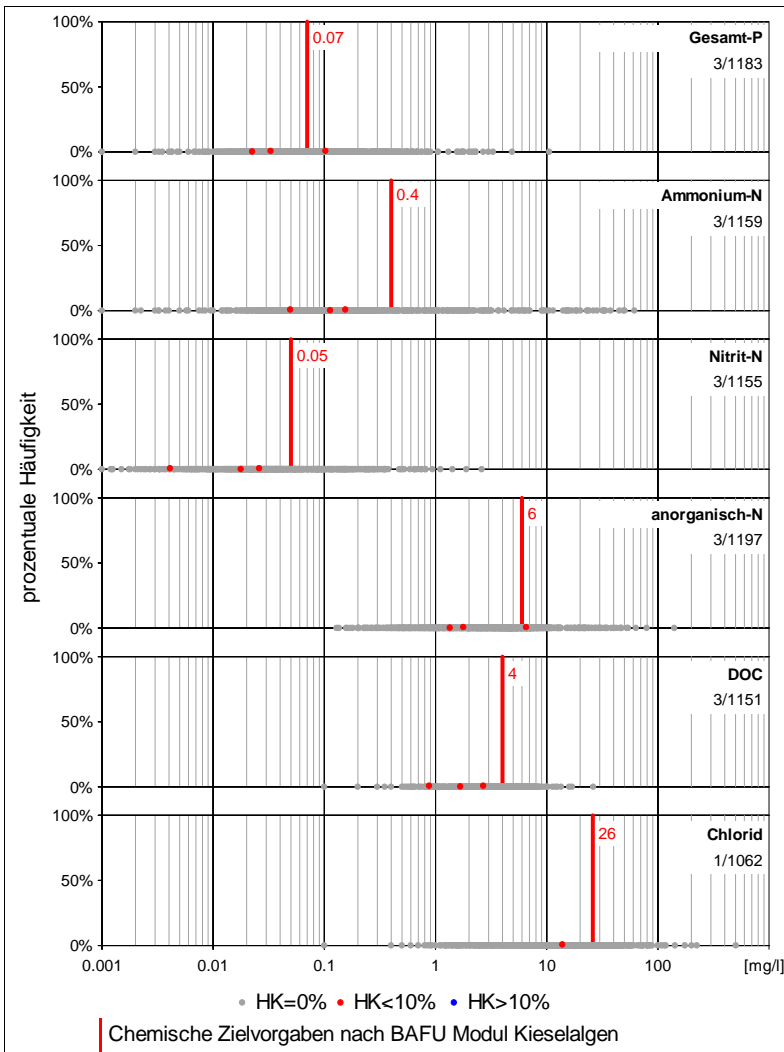


## Anzahl Proben und Vorkommen

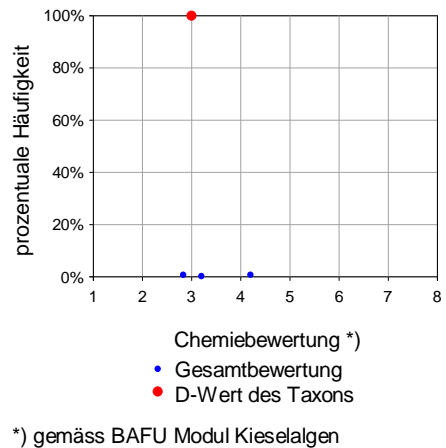


<b>Fließgewässer:</b>	35 / 4031	0.9%
<b>See:</b>	2 / 468	0.4%
<b>Kläranlagen:</b>	0 / 46	0.0%
<b>Sonstige:</b>	0 / 9	0.0%
<b>Total:</b>	37 / 4554	0.8%

## Chemieparameter



## Chemiebewertung



## Kieselalgenindex DI-CH

