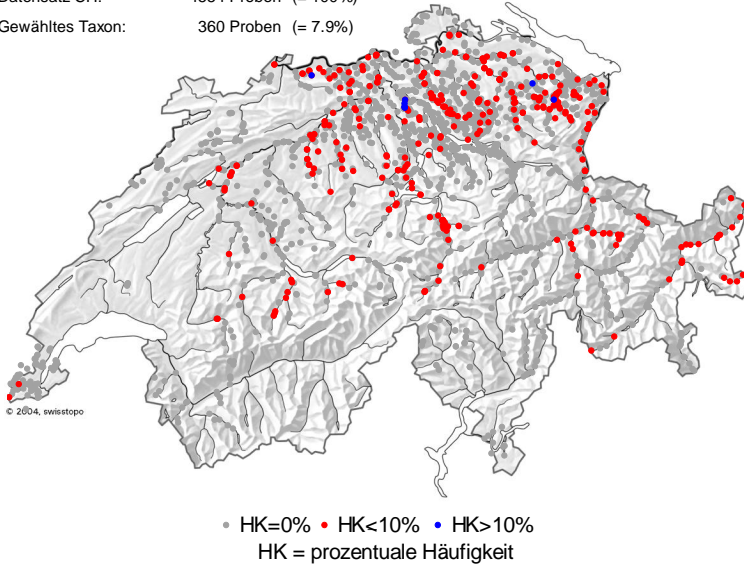


# Diatoma problematica LANGE-BERTALOT

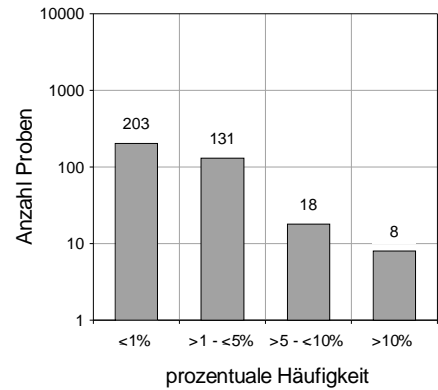
DVNR: 16207

## Geografische Verteilung

Datensatz CH: 4554 Proben (= 100%)  
 Gewähltes Taxon: 360 Proben (= 7.9%)

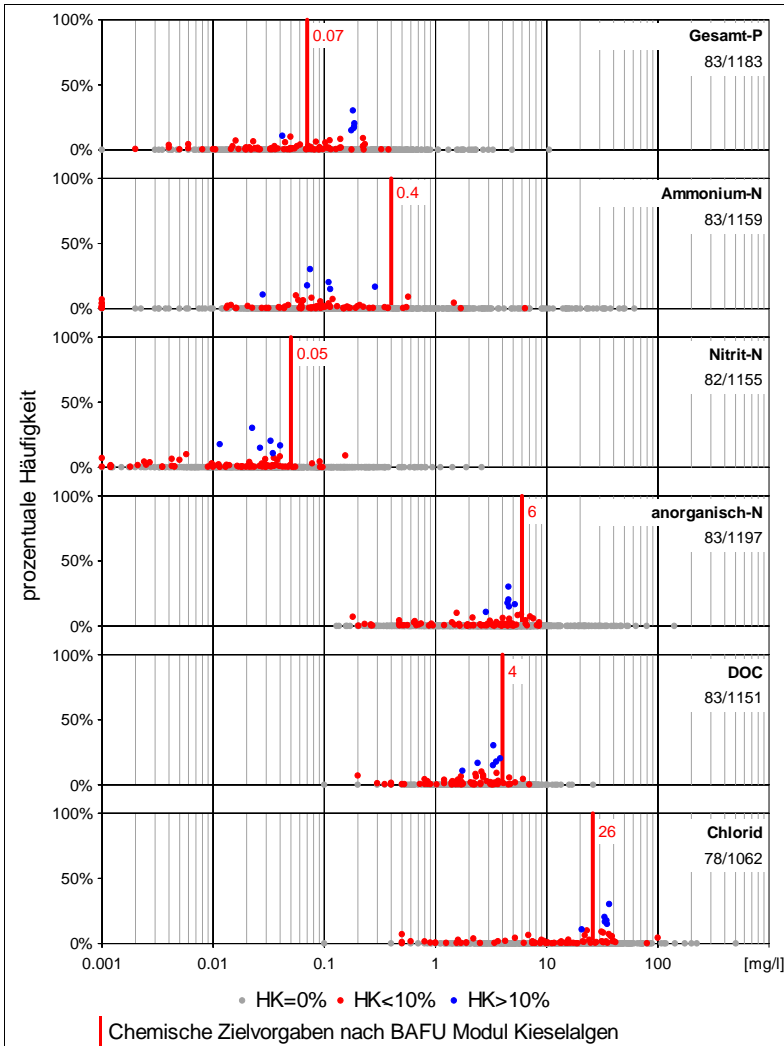


## Anzahl Proben und Vorkommen

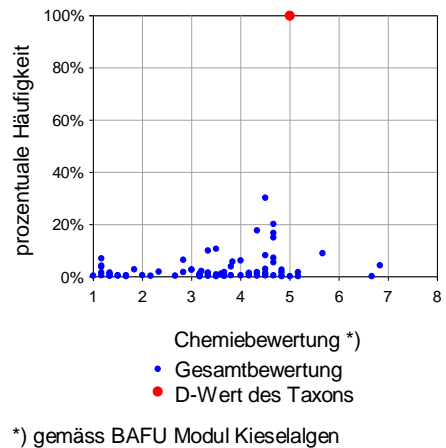


<b>Fließgewässer:</b>	357 / 4031	8.9%
<b>See:</b>	3 / 468	0.6%
<b>Kläranlagen:</b>	0 / 46	0.0%
<b>Sonstige:</b>	0 / 9	0.0%
<b>Total:</b>	360 / 4554	7.9%

## Chemieparameter



## Chemiebewertung



## Kieselalgenindex DI-CH

