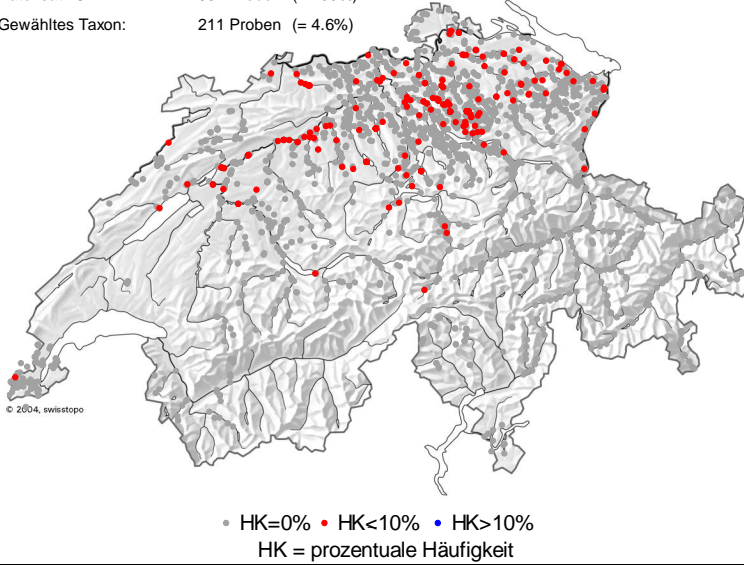


Cymatopleura solea (BREBISSON) W.SMITH

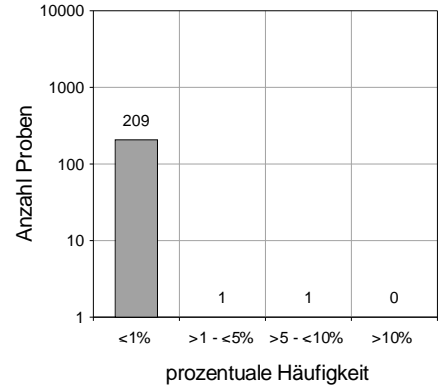
DVNR: 6031

Geografische Verteilung

Datensatz CH: 4554 Proben (= 100%)
 Gewähltes Taxon: 211 Proben (= 4.6%)

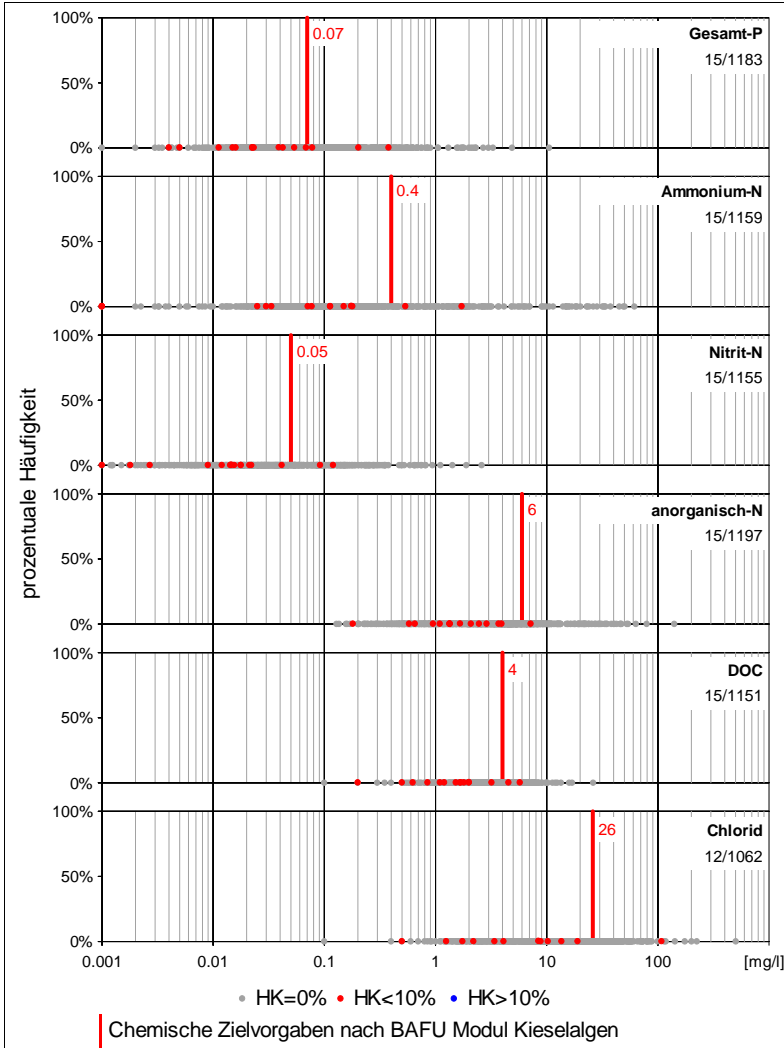


Anzahl Proben und Vorkommen

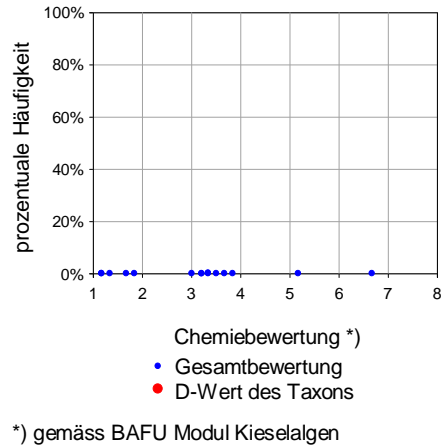


Fließgewässer:	157 / 4031	3.9%
See:	54 / 468	11.5%
Kläranlagen:	0 / 46	0.0%
Sonstige:	0 / 9	0.0%
Total:	211 / 4554	4.6%

Chemieparameter



Chemiebewertung



Kieselalgenindex DI-CH

