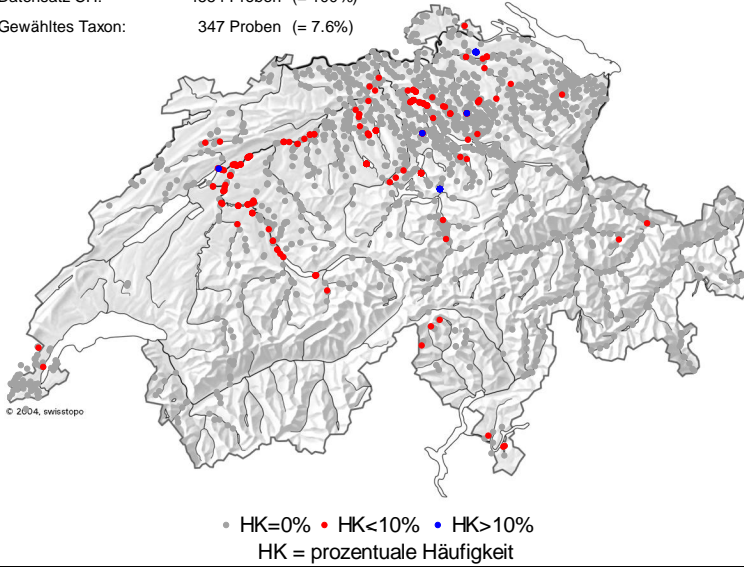


Cyclotella ocellata PANTOCSEK

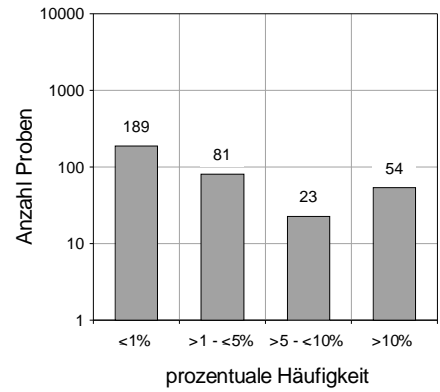
DVNR: 6936

Geografische Verteilung

Datensatz CH: 4554 Proben (= 100%)
 Gewähltes Taxon: 347 Proben (= 7.6%)

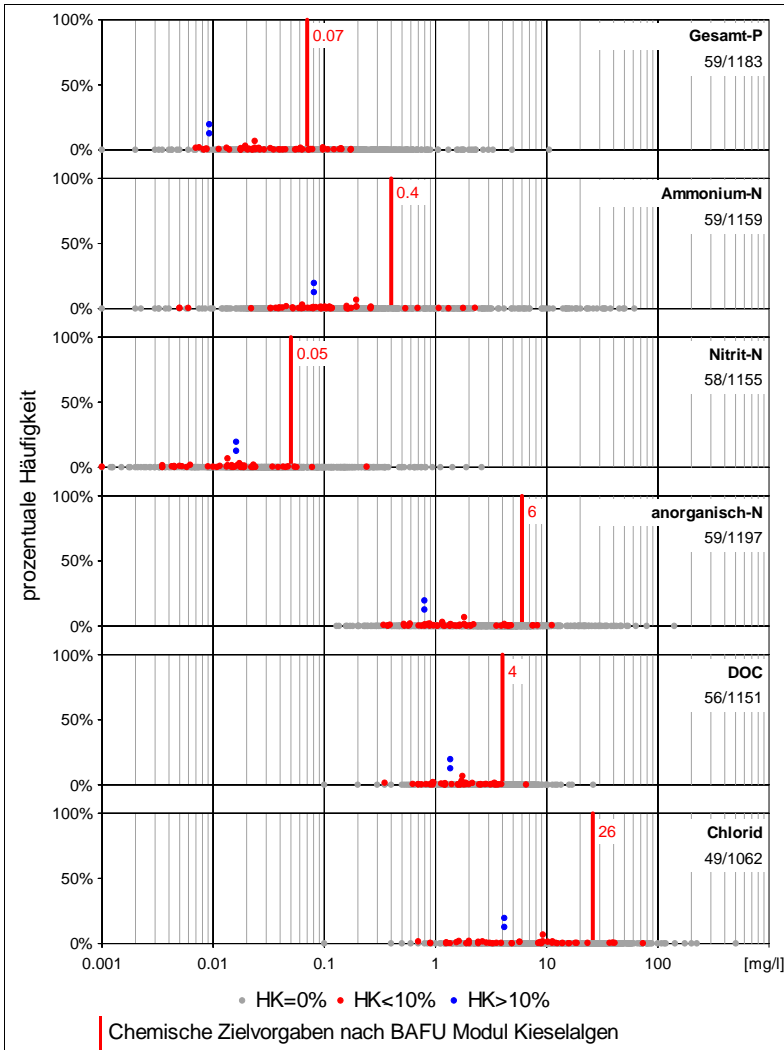


Anzahl Proben und Vorkommen

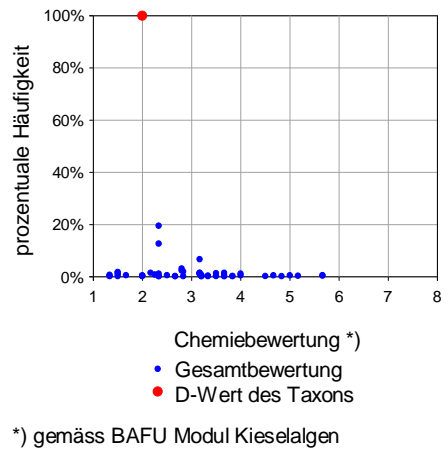


Fließgewässer:	169 / 4031	4.2%
See:	176 / 468	37.6%
Kläranlagen:	0 / 46	0.0%
Sonstige:	2 / 9	22.2%
Total:	347 / 4554	7.6%

Chemieparameter



Chemiebewertung



Kieselalgenindex DI-CH

