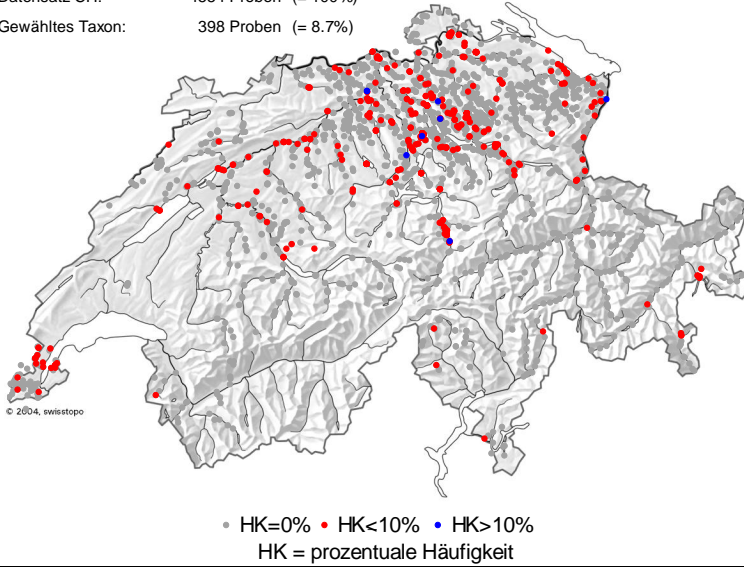


# Achnanthes conspicua A.MAYER

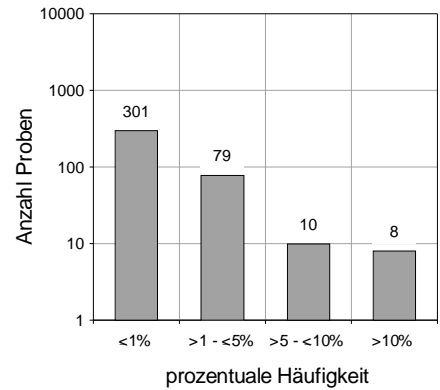
DVNR: 6855

## Geografische Verteilung

Datensatz CH: 4554 Proben (= 100%)  
 Gewähltes Taxon: 398 Proben (= 8.7%)

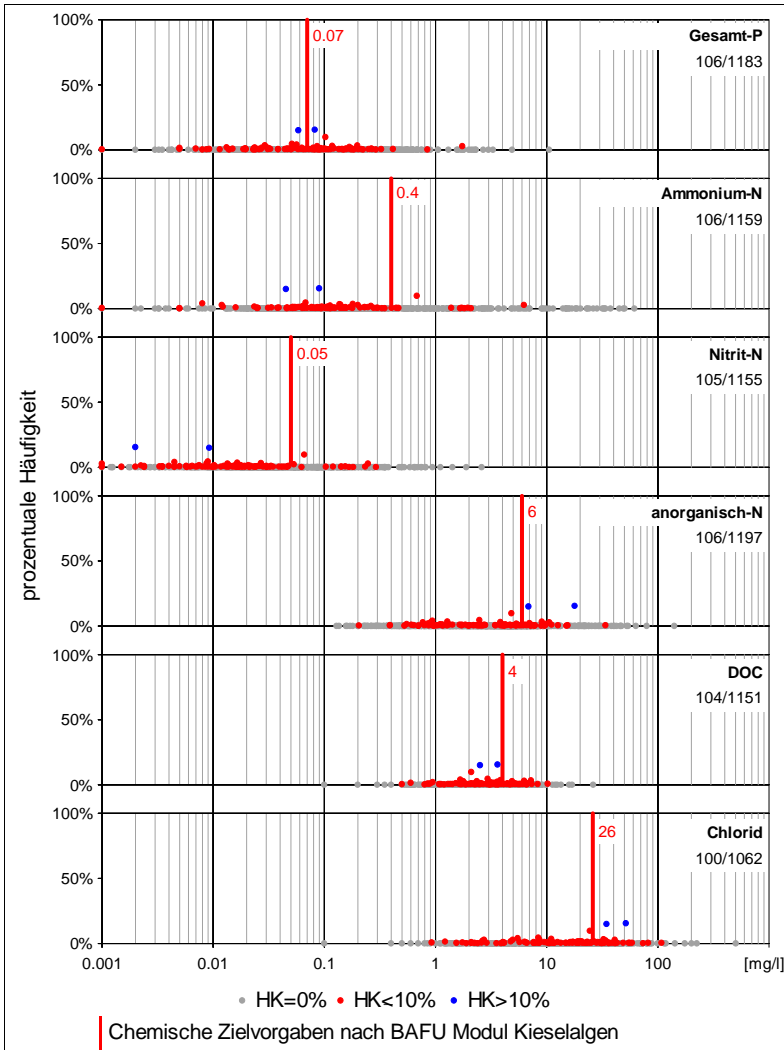


## Anzahl Proben und Vorkommen

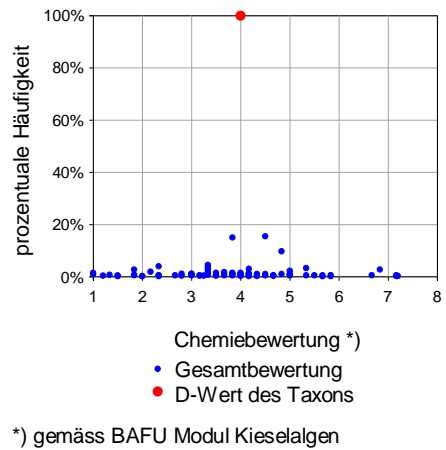


<b>Fließgewässer:</b>	328 / 4031	8.1%
<b>See:</b>	66 / 468	14.1%
<b>Kläranlagen:</b>	1 / 46	2.2%
<b>Sonstige:</b>	3 / 9	33.3%
<b>Total:</b>	398 / 4554	8.7%

## Chemieparameter



## Chemiebewertung



## Kieselalgenindex DI-CH

